

Making the high-speed connection with fiber



1000 Mbps Fiber Gigabit Ethernet Card

GA621

When your network calls for a speed upgrade, placing a NETGEAR GA621 Fiber Gigabit Ethernet Card in the server does the trick quickly. The high performance card provides serious throughput with a 64-bit PCI bus and speeds up legacy systems with 32-bit PCI capacity. Plug-and-play installation makes it ultimately easy to plug-into a Gigabit network.

HIGH-PERFORMANCE

Fiber connectability speeds up your network with Gbps performance.

SERVER SUPPORT

NETGEAR drivers are optimized for peak server performance and extensive driver support is provided for interoperability with all major operating systems.

FLEXIBLE

The card works with both 64-bit and 32-bit PCI buses and automatically adjusts for straight-through or crossover cables.

SIMPLE

Plug and play installation makes set-up a snap.



Help is there when you need it!

NETGEAR provides free, 24x7

telephone and e-mail technical

support in English, with selected

local language support during

of office hours

NETGEAR Inc.
4500 Great America Parkway
Santa Clara, CA 95054
USA

Phone: 1-888-NETGEAR
E-mail: support@NETGEAR.com
www.NETGEAR.com

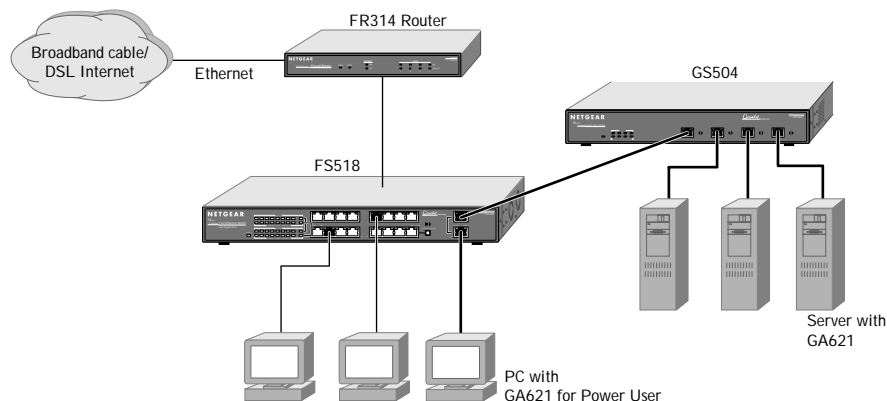
In-Country Phone Support

(24x7 phone support in English, local language support during office hours.)

Australia	1800-787-638	Korea	00308-11-0319
Austria	00800-06384327	Netherlands	0800-023-0981
	(00800-0-NETGEAR)	New Zealand	00800-1233-4566
Denmark	808-82179	Norway	800-12041
Canada	1-888-NETGEAR	Singapore	001-800-1233-4566
Finland	0800-111-036	Sweden	0200-298-298
France	0800-77-17-53	Switzerland	00800-0638-4327
Germany	00800-06384327		(00800-0-NETGEAR)
	(00800-0-NETGEAR)	United Kingdom	020-7216-0014
Hong Kong	001-800-1233-4566	United States	1-888-NETGEAR
Japan	0120-66-5402	All Other Countries	+1 801-236-8499

NETGEAR® is a trademark of NETGEAR, Inc. Windows® is a registered trademark of Microsoft Corporation. Other brand and product names are trademarks or registered trademarks of their respective holders. Information is subject to change without notice. All rights reserved.

July 2001



TECHNICAL SPECIFICATIONS

Standards Compliance

IEEE 802.3z 1000BASE-SX Gigabit Ethernet

Interface

PC PCI Local Bus Revision 2.2

32 or 64 Bit PCI Compatible

PCI Clock speed from 33 to 66 MHz

Duplex SC Connector

LEDs

LINK (1000 Mbps)

DATA (Activity)

MTBF

210,251 hours (~ 24 years)

Jumbo Frame Support

Frame sizes: 1514, 4088, 9014, 10000,
16728

Distance

550m with Multi-mode Fiber (50μ)

275m with Multi-mode Fiber (62.5μ)

PACKAGE CONTENTS

GA621 Ethernet Card

Installation guide

Driver and documentation CD

Warranty and owner registration card

Support information card

DRIVERS PROVIDED

Windows® 95 OSR2

Windows 98

Windows Me

Windows NT® 4.0

Windows 2000 (Professional, Server,
Advanced Server)

Novell NetWare® 4.2, 5.0, 5.1

Red Hat Linux® 6.0, 6.1, 6.2, 7.0, 7.1



D-GA621-001

www.NETGEAR.com

NETGEAR®